

Bible Focus: The Ten Plagues (Part 2)

Verse: Give thanks to the Lord and pray to Him. Psalm 105:1

Bible Point: God cares for us

Today we learned about how Pharaoh didn't like the Israelites and how God sent plagues so that Pharaoh would let the Israelites leave. We learned about the last 5 plagues He sent. Today we are going to do a craft that reminds us of all 10 plagues God sent to Egypt!

Supplies Needed:

Paper lunch sacks

Construction paper

Glue

Crayons/markers



Instructions:

This is a fun activity that allows you and your child to make as little crafts to help remind them of the 10 plagues God sent. Help your child get creative making puppets from paper sack lunches of some of the different plagues! You can use construction paper, stickers, googly eyes or anything you have around your house to have fun with this project!

Bible Focus: The Ten Plagues (Part 2)

Verse: Give thanks to the Lord and pray to Him. Psalm 105:1

Bible Point: God cares for us

Today we learned about how Pharaoh didn't like the Israelites and how God sent plagues so that Pharaoh would let the Israelites leave. We learned about the last 5 plagues He sent. Today we are going to do a craft that reminds us of all 10 plagues God sent to Egypt!

SUPPLIES NEEDED:

Construction paper

Plaques 1-10 attachment

Crayons/markers

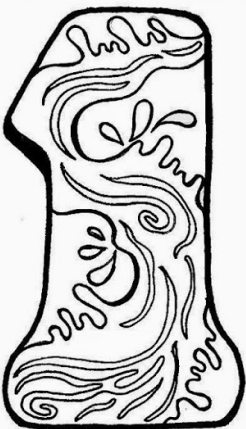
Scissors

glue



INSTRUCTIONS:

Let your child pick a piece of any color construction paper. Help them cut a big oval around the outside and a small oval in the inside to make a necklace shape. At the top cut a slit so that they can open it up to put around their neck! Print out the attached Plaques 1-10 sheet and help your child cut out each number. Let them color each plaque and glue it onto their necklace!



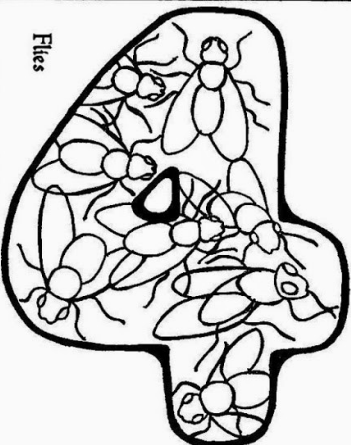
Water Turned to Blood



Frogs



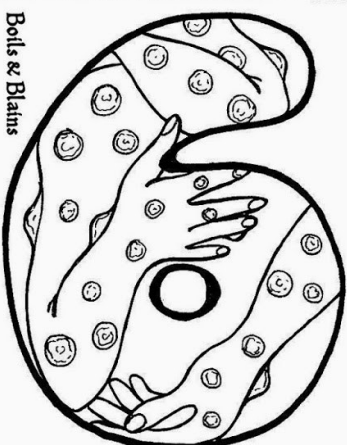
Lice



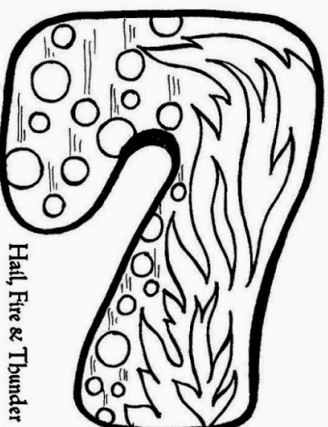
Flies



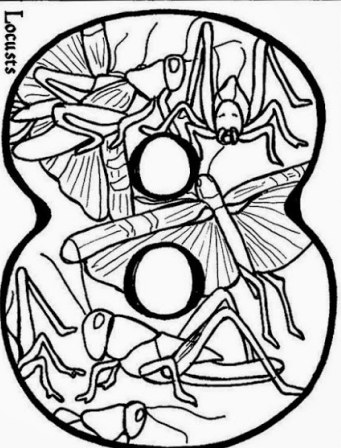
Death of Egyptian Cattle and Animals



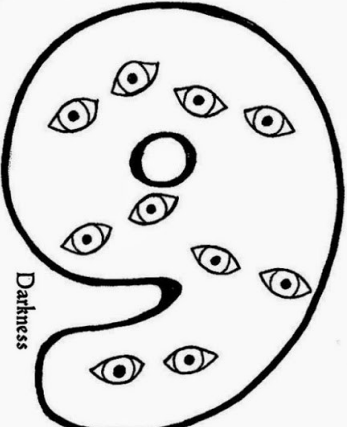
Boils & Blains



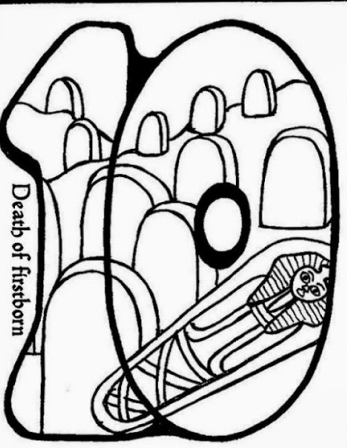
Hail, Fire & Thunder



Locusts



Darkness



Death of firstborn

